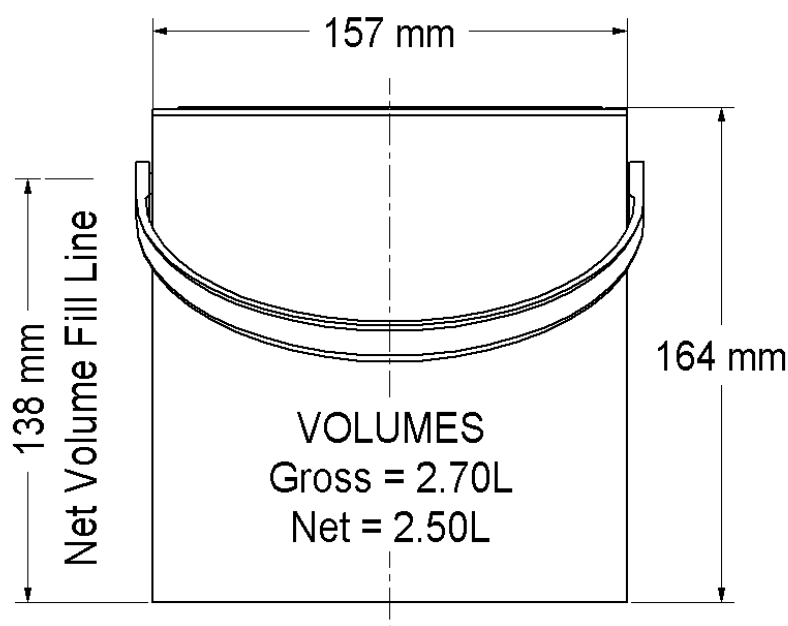




PLAST-PACK

2.5L 157 PT



SPECIFICATION

LID

HANDLE TYPE

MATERIAL

COLOUR

WEIGHT

QUANTITY (Empty)

157 U Lid (Gasket Seal available for products with lower viscosity than Emulsion)

Plastic

Polypropylene Co-Polymer Food Grade

White – Contact Clear available on request

Container 164 (+/- 8g) Lid 27g (+/-4g)

Containers 343 per pallet (plt 1000mm x 1200mm)

Lids 3920 per pallet (2 boxes)

STACKING (Empty)

Containers: 5 pallets high (weight per plt 77 kgs)

Lids in Boxes: 3 pallets high

FILLING

(Based on Product Density 1.4,

Air Temperature 20 °C)

196 Per Pallet (49 per layer x 4 high)

794 mm Maximum Pallet Height

See accompanying page for **Filled Container Specification**

RPC strongly recommend that Stacking Trials be conducted using the appropriate Product under Normal conditions

FILL TEMPERATURE

Max 70°C (avoid prolonged exposure over 40 °C & below 0 °C)

DECORATION

Off-Set Printing in up to 6 cols

In Mould & Post Mould Label Options Available

Key Lines Available on Request

WE RECOMMEND THAT YOU CONSULT OUR DECORATION ADVISORY SERVICE BEFORE BRIEFING YOUR DESIGNER

COMPATABILITY

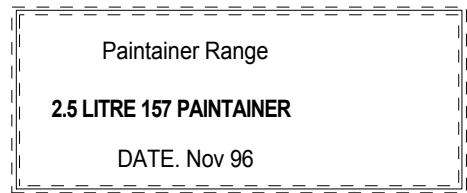
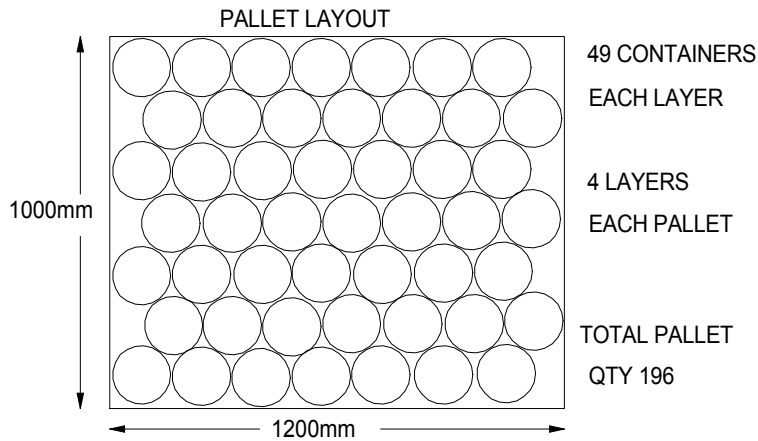
It is the responsibility of our customers to ensure their product is compatible with the container. Trials can be carried out by RPC on request.

Notes: Details given in this Data Sheet are correct at time of going to press. Further details can be found on the General Information Sheet. However for applications where these are critical please consult our Technical Staff.

RPC CONTAINERS LTD

FILLED CONTAINER

RECOMMENDED STACKING PATTERN



STACKABILITY

All Data given assumes a Product Density of 1.4 and an Air Temperature of 20°C

The Maximum height of Pallets holding filled Paintainers is 2. Use a Layer Pad between each Layer of Paintainers. It is Recommended that Pallets of Filled Paintainers should be Banded, Shrink Wrapped or Stretch Wrapped with a 10mm Spreader Board over the top layer, it is also recommended that the Shrink Wrap or Stretch Wrapping is securely located around the four sides of the Pallet.

TEMPERATURE

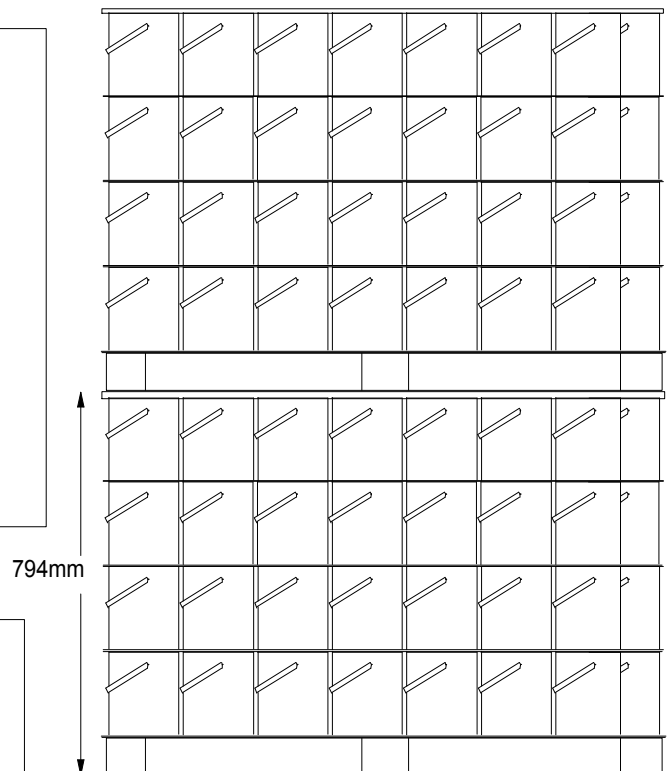
Filling temperature: Polypropylene 70°C Max.

NB: Stacking performance is affected by temperature therefore do not Lid and Stack until product has cooled.

Avoid prolonged exposure over 40°C and below 0°C.

For all other details related to our products please refer to the RPC Publicity Brochure or our Technical Staff.

STATIC LOAD TWO PALLETES HIGH



N.B. RPC Recommend that Stacking Trials are conducted using the appropriate Product Under normal conditions